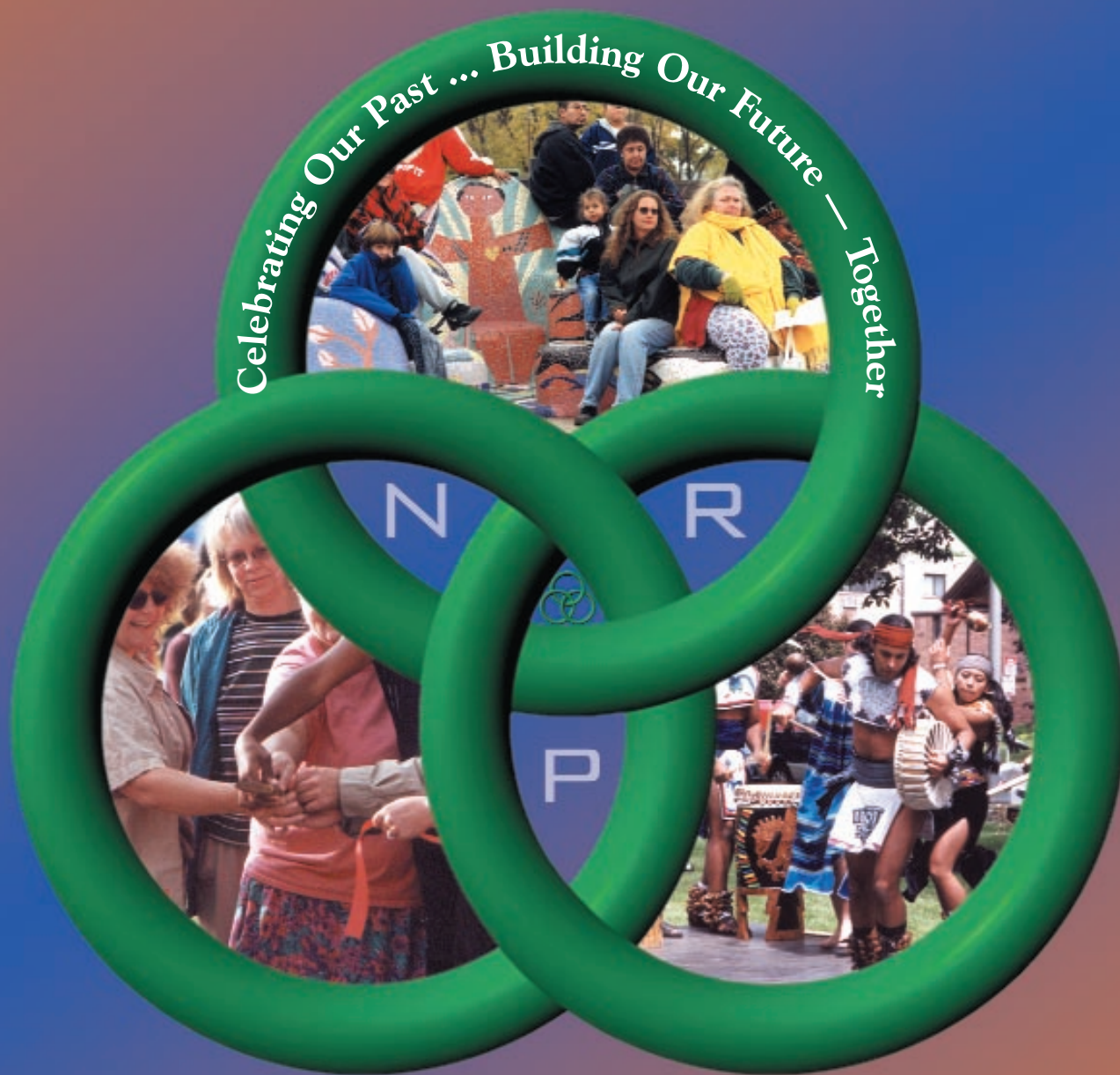


# NRP's Historic 10-year Anniversary Awards Dinner

Saturday, February 24, 2001



Celebrating Our Past ... Building Our Future — Together

## Awards Guide



# From The Director

---

*On Feb. 15, 1991, six organizations were selected to begin developing plans for the revitalization of their neighborhoods. Many residents, organizations and public officials watched with curiosity while the Neighborhood Revitalization Program gave responsibility and resources to residents and the neighborhoods. No one could have predicted the impact that this humble beginning would have on the landscape and character of Minneapolis.*

*Ten years later, thousands of residents and other volunteers have developed plans that have recreated a sense of belonging and place for the residents of this city. The plans that they created and the strategies that they have helped implement have invested millions of dollars in making Minneapolis and its neighborhoods better places to live, work, learn and play. The results are evident when you visit the flower garden in renovated Loring Park, see the scaffolds in Seward, watch the road graders on Franklin Avenue, use the computers in the lab at Waite Park Elementary School, read a book at Hosmer Library, or ride a bike on the Midtown Greenway. If you wonder whether or not people can change places, you need to visit "Eat Street," have a cup of coffee at Mill City Coffee or attend a Harrison neighborhood meeting at the Harrison School and Community Center.*

*The residents, businesses and leaders of Minneapolis believed in the people of the city and their ability to set priorities and accomplish change. The projects and programs in this guide illustrate how far we have come and how much we have accomplished. It is only the beginning.*

*Sincerely,*



*Bob Miller,  
Director*

# From The Chair

---

*I am extremely proud to be with you this evening to celebrate the 10-year anniversary of the Minneapolis Neighborhood Revitalization Program.*

*To commemorate this historic occasion, it is only appropriate that we recognize the outstanding work that countless volunteers and neighborhood organizations have done to make our neighborhoods better places to live, work, learn and play.*

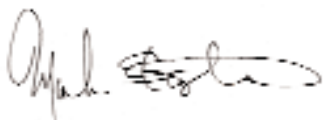
*Tonight's NRP Awards Dinner is not only being held to honor the award winners, but to recognize the hard work and dedication of everyone who has ever participated in the NRP. Tonight we are all winners.*

*Since the program began in February 1991, residents participating in the NRP have been involved in more than 1,400 projects throughout the city. Inside this booklet you will find descriptions for 63 of these projects that have been nominated for NRP Awards.*

*In addition to 12 NRP Awards that will be handed out by the NRP Awards Committee, I will be selecting one project to be the recipient of the Prestigious Chairperson's Award.*

*Once again I want to commend you for the work you have done on behalf of our neighborhoods and city. I am confident you will produce even greater things in Phase II of the program.*

*Sincerely,*



*Mark Stenglein  
Chair,  
NRP Policy Board*

# Best Single Site Renovation

---

## > Agape Dos Home for Persons Living with AIDS



Agape Dos, a home for persons living with AIDS, at 3100 Harriet Ave. S., opened in November 1999. Agape Home joined in a partnership with Powderhorn Residents Group to work with the Lyndale Neighborhood Association and the Lyndale Neighborhood Development Corporation to develop a home that would focus on Latin American culture. Lyndale's NRP funds were used to acquire and prepare the site for construction of this four-bedroom home with a common kitchen and dining area, living and recreational space, and small area for staff.

### **Project Partners:**

*Lyndale Neighborhood Development Corporation; Lyndale Neighborhood Association; Minneapolis Neighborhood Revitalization Program; AGAPE Homes; Powderhorn Residents Group; Minnesota Housing Finance Agency; Minneapolis Community Development Agency; Otto Bremer Foundation; Bush Foundation; BEIM Foundation; Thorpe Foundation; Greater Minneapolis Metropolitan Housing Corporation; DJR Architects; Michlitsch Builders, Inc.*

## > D.B. Lyon House Renovation Project

Built in 1892 by former Episcopal minister D.B. Lyon, this home at 419 Oak Grove St. is a symbol of what makes neighborhood participation and city living great. Just days from demolition, the Lyon house was saved by board members of Citizens for a Loring Park Community (CLPC) and other volunteer activists. After committing \$130,000 in NRP funds and securing a developer, the home was purchased from St. Mark's Cathedral. After four years, the 7,000 square-foot mansion is now home to owners who relish in its unique character. The Lyon House made a difference because it signaled the end of decline for the Loring Park Neighborhood and the beginning of great things to come!



### **Project Partners:**

*Citizens for a Loring Park Community; Minneapolis Neighborhood Revitalization Program; City of Minneapolis; St. Mark's Cathedral; Minneapolis Community Development Agency; Glen Thorpe*

## > little/LOTS Housing Program

In 1998, a national design competition initiated by the Powderhorn Park Neighborhood Association (PPNA) solicited plans for affordable, single-family housing on undersized lots. The competition attracted 165 entries from throughout the country. Shortly after PPNA received a variance from the city in 1999, construction began on the competition's winning design. Powderhorn Residents Group was chosen as the developer, and the home was sold only one month after it was completed in June 2000.



### **Project Partners:**

*Powderhorn Park Neighborhood Association; Powderhorn Residents Group; Minneapolis Neighborhood Revitalization Program; Meland, Hepper Architects; Minneapolis Community Development Agency; Alissa Oppenheimer; Christine Cinque*

### > Longfellow House Restoration Project

Robert "Fish" Jones, a colorful philanthropist and entrepreneur who owned a 4.6-acre botanical garden, built the Longfellow House in 1907 along with a zoological park situated a short distance from Minnehaha Falls. Mr. Jones built the house in a two-thirds scale model of a home owned by Henry Wadsworth Longfellow from Cambridge, Mass. The house was built as a monument to the poet who immortalized the area with his romantic poem, "The Song of Hiawatha." This poetry contributed to the designation of this historic area as a national landmark. The house was used in a variety of ways (from a library to a haunted house) during its life and faced impending doom on more than one occasion. The latest attempt at restoration was finally successful and the rest is history. Minneapolis can be proud of the contribution the Longfellow House will make for generations to come, thanks to the efforts of a small group of concerned citizens.



#### **Project Partners:**

*Longfellow Community Council; Minneapolis Neighborhood Revitalization Program; Longfellow House Restoration Group; Minneapolis Park and Recreation Board; City of Minneapolis; State Department of Tourism; Minnesota Department of Transportation*

### > 3044 Pillsbury Avenue South Development



Its address is 3044 Pillsbury, but the face of the new owner-occupied single-family home opens to 31st Street, a busy street one block south of Lake Street in the Lyndale neighborhood. Located on one of the "problem blocks" of the neighborhood a few years ago, 3044 Pillsbury, with its wrap-around porch, black iron fencing, and shiny silver metal roof, now stands as a signpost for all Lyndale neighborhood residents. It is a sign that problem areas can be reclaimed and renovated. It is a sign of new housing yet to come. It is another sign that Lyndale neighborhood is a good place to live, work, play and learn. NRP funds brought new housing to the street. And more is yet to come!

#### **Project Partners:**

*Lyndale Neighborhood Development Corporation; Minneapolis Neighborhood Revitalization Program; Minneapolis Community Development Agency; Choice Wood Design Build*

### > Van Dusen Mansion Renovation

Built in 1894 by grain industry mogul George Van Dusen, the mansion has been home to a host of private owners, a schoolhouse and Aveda's Horst Institute. Nearly a century after its construction, however, the grand landmark was scheduled for demolition. Deemed too costly to renovate, the site sat vacant for more than a decade while a small homeless population took up unofficial residence. Vandals, too, descended on the abandoned property, and the Van Dusen fell quietly into ruin. The Stevens Square Community Organization (SSCO) set out to save their neighborhood treasure and contributed \$300,000 in NRP funds toward renovation of the mansion. The project received a 1997 Heritage Preservation Award and a record-breaking 5,000 visitors toured the mansion during the Tenth Annual Minneapolis-St. Paul Home Tour. Once slated for the wrecking ball, the Van Dusen now sits proudly on the National Register of Historic Places.

#### **Project Partners:**

*Stevens Square Community Organization; Elliot Park Neighborhood, Inc.; Minneapolis Neighborhood Revitalization Program; Robert Poehling; Ronald Bates; Minneapolis Community Development Agency; Firstar Bank*

# Most Innovative Housing Project

---

## > Artists on Chicago



Artists on Chicago is a scattered-site, 10-unit, three-phase affordable home-ownership housing project designed for artists. The project was initiated in 1989 by block clubs adjacent to the redevelopment site. Each unit provides both living and working space for the residents. The studio spaces, which are on the street side of the building, have patio doors that can be opened to the street, creating a storefront appearance. The project was successful in selling three of the eight units to homeowners at or below 50 percent of the area's median income. Two units were sold to buyers below 60 percent of the median income and another two units went to buyers below 80 percent of median income. (One of

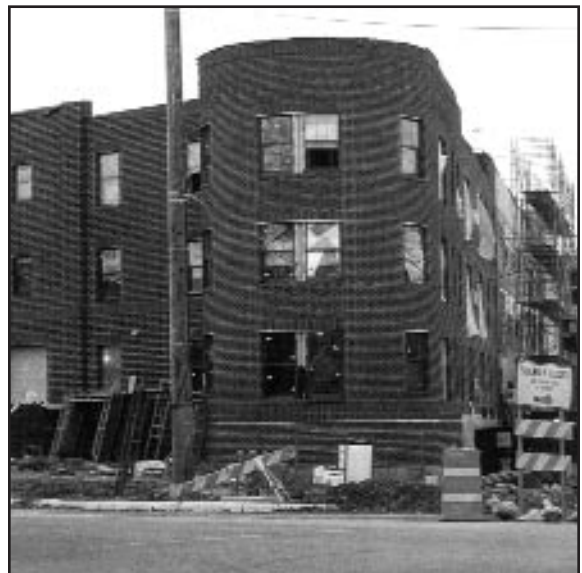
the initial eight units is rental; it's an owner-occupied duplex.)

### **Project Partners:**

*Powderhorn Park Neighborhood Association; Central Neighborhood Improvement Association; Powderhorn Park and Central Neighborhood Block Clubs; Powderhorn Residents Group; Local Initiatives Support Corporation; HOMS Initiative; Minneapolis Community Development Agency*

## > Elliot Park East Village Mixed-Use Rental/Commercial Development Project

East Village, developed by Central Community Housing Trust, is the first new market-rate housing to be constructed in Elliot Park in decades. Elliot Park Neighborhood, Inc. contributed \$500,000 of its NRP funds to provide gap financing and help leverage the project. Forty of the 179 rental units in East Village will be affordable to households with incomes at or below 50 percent of the area median income. The development will include underground parking and some 5,000 square feet of storefront commercial space. The architecture and building materials are reflective of the traditional Elliot Park brownstone motif. East Village is due for completion in the summer of 2001.



### **Project Partners:**

*Elliot Park Neighborhood, Inc.; Central Community Housing Trust of Minneapolis; Augustana Care Corporation; Minneapolis Neighborhood Revitalization Program; Minneapolis Community Development Agency; National Equity Fund; Minnesota Housing Finance Agency; U.S. Department of Housing and Urban Development; Family Housing Fund, Greater Minneapolis Metropolitan Housing Corporation, Norwest Housing Foundation, Minneapolis Foundation; McKnight Foundation; Local Initiatives Support Corporation; Metropolitan Council; Minnesota Department of Trade and Economic Development; Augustana Care Corporation; U S Bancorp Piper Jaffray; Federal Home Loan Bank of Des Moines.*

### > Phillips Park Initiative

This popular project with neighborhood-wide support emerged from, and was developed in, Phillips District 1 (now Phillips West). The Phillips Park Initiative (PPI) involved a range of creative solutions to the neighborhood's housing needs - including renovation, new construction, and improvements to existing housing. The PPI partnered about a dozen organizations within the community to create a beautiful, high-profile and high-quality development that reflects neighborhood pride, past and future.



#### **Project Partners:**

*Phillips District 1 (Phillips West); Minneapolis Neighborhood Revitalization Program; Lutheran Social Service; Honeywell; Allina Foundation; Phillips Eye Institute; Ebenezer Society; Minneapolis Memorial Blood Center; Minnesota Housing Finance Agency; Abbott Northwestern Hospital; Housing Resource Clearinghouse of Phillips; Our Saviors Lutheran Church; Minneapolis Community Development Agency; Metro Livable Communities; Metropolitan Council*

### > Northeast Housing Resource Center

The Northeast Housing Resource Center has not only served 4,695 residents of Northeast Minneapolis, but its success has led to the opening of housing resource centers in North Minneapolis and South Minneapolis in order to deliver the same high quality service to the residents there — 11,340 to date! The project has proven its achievements to the point where both Hennepin and Ramsey counties have joined as partners.

#### **Project Partners:**

*St. Anthony West Neighborhood Organization; Minneapolis Neighborhood Revitalization Program; Greater Metropolitan Minneapolis Housing Corporation; St. Anthony East Neighborhood Association; Sheridan Neighborhood Organization; Hennepin County; Ramsey County*

# Best Housing Program

---

## > Corcoran Roof Replacement Program

The Corcoran Neighborhood Organization (CNO) launched a public education campaign to inform residents in the Corcoran neighborhood that their roofs may have been damaged during the May 15, 1998, hailstorm. Because the entire area was declared a Catastrophic Area by the insurance industry, adjusters were prepared to totally replace hail-damaged roofs. Thanks to CNO's public education campaign, 70 percent of the roofs — including all owner-occupied, rental properties and churches — now have new roofs. In addition, many, perhaps most, of these homeowners also received checks for new siding, painting and windows. One of the programs promoted by CNO to Corcoran neighborhood residents was the MCDA Rehab Support Program. The program offered one-to-one matching grants for amounts up to \$17,000 for homeowners who remained in their homes for six years.

### **Project Partners:**

*Corcoran Neighborhood Organization; Minneapolis Community Development Agency; Southside Neighborhood Housing Fair; Corcoran News; Irwin Mortgage*

## > First Avenue Renaissance



A stretch of First Avenue South between 25th and 26th streets was long regarded as one of the most blighted and difficult areas in the Whittier Neighborhood. Several substandard or condemned homes on 20-foot and 30-foot lots were acquired with NRP Comp Block funds, and families who had been renting the substandard homes were given funds enabling them to purchase homes elsewhere.

The substandard properties were demolished, the lots combined or reconfigured and two historic homes and one historic duplex were moved to the site and restored. Lowry Hill East Neighborhood, the Wedge Co-op and First Christian Church donated historic homes that were saved from demolition and moved, which contributed to the Whittier Alliance being recognized for the NRP 2000 Heritage Preservation Award.

### **Project Partners:**

*Whittier Alliance; Lowry Hill East Neighborhood Association; Minneapolis Neighborhood Revitalization Program; Minneapolis Community Development Agency; Wedge Community Co-op; HOMS Initiative; First Christian Church*

## > HOMS Initiative

The HOMS Initiative is a collaboration of neighborhood groups, foundations and nonprofit developers that function to create affordable home-ownership opportunities in South Minneapolis. Since its beginning in 1995, the project has leveraged more than \$2.6 million and succeeded in the production of 150 affordable housing units.

### **Project Partners:**

*Powderhorn Park Neighborhood Association; Whittier Alliance; Central Neighborhood Improvement Association; Phillips NRP; Minneapolis Neighborhood Revitalization Program; Honeywell Foundation; Project for Pride in Living; Powderhorn Residents Group; Habitat for Humanity; Family Housing Fund; Local Initiatives Support Corporation; Greater Minneapolis Metropolitan Housing Corporation; Southside Neighborhood Housing Services; Abbott Northwestern Hospital; Minneapolis Community Development Agency; Allina Foundation; Minneapolis Foundation; Cargill Foundation; NSP; St. Paul Companies; Fannie Mae Foundation; TCF; Federal Home Loan Bank of Des Moines; US Bank Foundation; Firststar Banks; General Mills Foundation; Marquette Banks*

### ➤ Jordan Home Improvement Revolving Loan Program

While home-improvement revolving loan programs have become a something of a staple in the NRP, Jordan's program demonstrates the impact such a program can have on a neighborhood. Jordan's loan program started out with \$700,000. Because the funds have revolved and the loans have been sold on the secondary market, the program has provided more than \$2 million in home-improvement loans. What's more, the program has assisted those who need it most. One-third of all loans have been provided to female-headed households (whose incomes are generally lower) and loan recipients' annual income has averaged under \$30,000.

#### **Project Partners:**

*Jordan Area Community Council; Northside Neighborhood Housing Services; Minneapolis Neighborhood Revitalization Program*

### ➤ Logan Park Problem Properties Program

The Problem Properties program was conceptualized by the Logan Park Housing Committee as a way of addressing the worst properties in the neighborhood. Faced with limited funds to do the traditional "purchase, rehab or rebuild" approach, LPNA decided to hire a housing resource person who would work individually with current owners and with current public programs to encourage improvements. This program utilized a "carrot" rather than "stick" approach to improving the worst properties in the neighborhood. First, the worst properties were identified with involvement by the neighborhood. Second, a tactful, non-threatening letter was sent to the problem property owners informing them of available programs, the concerns of their neighbors, and improving market conditions in the neighborhood. This was followed by personal phone calls offering assistance. Almost one-fourth of the 100 problem property owners responded to this approach and made some improvements, with 16 properties improving enough to be removed from the problem list. A thank-you letter was sent to those making improvements.



#### **Project Partners:**

*Logan Park Neighborhood Association; Minneapolis Neighborhood Revitalization Program; Habitat for Humanity's A Brush with Kindness Program; Minneapolis Community Development Agency; US Bank; Wells Fargo; State Mutual Fund; Elim Baptist Church; Valspar; General Mills; James Page Brewing Company; City of Minneapolis; CCP/SAFE*

### ➤ STAWNO Housing Program

The successful low-interest revolving loan and rehab housing program in St. Anthony West has impacted more than 20 percent of the homes in just five years! With a targeted focus on improving homes that the market would not, due to costs, and the revolving nature of the loan program, St. Anthony West has positioned itself to enjoy quality housing for generations to come.

#### **Project Partners:**

*St. Anthony West Neighborhood Organization; Minneapolis Neighborhood Revitalization Program; Greater Minneapolis Metropolitan Housing Corporation; Northeast State Bank*

## Best Housing Program

### > Loring Park Leverage Improvement Program

The Loring Park Leverage Improvement Program (LIP) was designed to use NRP dollars to leverage private investment for renovating residential properties in the Loring Park neighborhood. With a \$600,000 investment, the neighborhood encouraged twice as much in private investment. More than 100 separate projects were completed throughout



the neighborhood in more than 40 buildings, totaling more than 2,000 units. The program was developed and managed largely by a volunteer committee of neighborhood residents and property owners.

#### **Project Partners:**

*Citizens for a Loring Park Community; Minneapolis Neighborhood Revitalization Program*

### > Marcy-Holmes Historic Restoration Program



The Marcy-Holmes Historic Homes Restoration Program provided forgivable loans for exterior improvements to owners of residential properties in the Fifth Street Historic District. Fourteen properties benefited from this program and generated significant positive impact in the neighborhood. Improvement ranged from the removal of aluminum and asphalt siding, to front-porch restorations, to the replacement of architectural details. A variety of housing types including single-family homes, apartments, condominiums and rooming houses were assisted through the program.

#### **Project Partners:**

*Marcy-Holmes Neighborhood Association; Minneapolis Neighborhood Revitalization Program; Minneapolis Heritage Preservation Commission; Minneapolis Community Development Agency; Union Bank*

# Best Transportation Plan

---

## > The Franklin Bridge Intersection Re-design

This five-legged intersection had been a major source of problems since the 1960s. For example, 19 people were injured in accidents involving automobiles during the three-and-a-half year period before the redesign. Since the redesign, just over three years ago, only four people have been injured.

The six-month intersection redesign process actively involved 20 major stakeholder groups. This was the first project in which many neighborhood people really collaborated with staff from Parks and from Public Works departments to create a consensus solution that every stakeholder considered a major improvement.



### **Project Partners:**

*Prospect Park East River Road Improvement Association; Minneapolis Neighborhood Revitalization Program; U of M students; U of M Planning; Pedestrians; Bicyclists; In-line Skaters; Wheelchair Users; Metro Transit; Minneapolis Public Works; University Good Samaritan; Southeast 76 Station, Tony Garmers (a local landlord); Grahn's Upholstery; Nearby residents (from three different districts); nearby Block Club Leaders; Minneapolis Park Department; Minneapolis Planning; Minneapolis Fire Department; Hennepin County Transportation; St. Anthony Park Association.*

## > Neighbors for Safe Driving Campaign



The Fulton-Lynnhurst Neighbors for Safe Driving Campaign was a joint neighborhood effort developed in collaboration with the Minneapolis Police Department to promote safer driving on 50th Street and other roads in the neighborhoods. This enforcement and education campaign included components such as lawn signs and billboards asking drivers to slow down, a citizen radar patrol, a neighborhood and school pledge program, and a neighborhood education effort. The campaign's goal was to educate and persuade drivers to change their driving behavior. The campaign was considered to be successful at raising driver awareness and promoting a greater sense of community within the neighborhoods.

### **Project Partners:**

*Fulton Neighborhood Association; Lynnhurst Neighborhood Association; Minneapolis Neighborhood Revitalization Program; City of Minneapolis; Minneapolis Police Department 5th Precinct; Minneapolis Public Schools*

## > Loring Park Bicycle Plan

Because of its proximity to downtown, the Loring Park neighborhood has many concerns dealing with the impact of automobile traffic on its residents. The work of the Bicycle Task Force has been directed to encourage people to leave their cars at home, take alternative transportation, and to make that a safe, fun and environmentally friendly option.

### **Project Partners:**

*Citizens for a Loring Park Community; Minneapolis Neighborhood Revitalization Program; Loring Bicycle Task Force; Minneapolis Park and Recreation Board; Minneapolis Public Works Department; Minneapolis Community and Technical College; 3M Company; 510 Groveland; Cathedral Church of St. Mark*



# Best Environmental Project

---

## ► Lakes Nokomis and Hiawatha Improvement Project

Taking its lead from Nokomis East residents voting on how to best invest their NRP funds, the Nokomis East Neighborhood Association's Environmental Task Force has accomplished several goals in a project to improve Lake Nokomis. These goals included improvements to the park, to the quality of water in the lake, and to sustainable plantings that would support both visual and water-quality improvements to the lake. In collaboration with partners from HPDL, SENA, other neighborhoods, local and statewide agencies, especially the Minnehaha Creek Watershed District, the MPRB and private organizations, Nokomis East has invested more than \$300,000 in NRP funds to accomplish many hundreds of thousands of dollars of environmental goals at the Lake.



### **Project Partners:**

*Nokomis East Neighborhood Association; Hale, Page, and Diamond Lake Community Association; Standish-Ericsson Neighborhood Association; Minneapolis Neighborhood Revitalization Program; Minneapolis Park and Recreation Board; Minnehaha Watershed Creek District; City of Minneapolis; City of Richfield*

## ► Longfellow/Mississippi River Gorge Committee Stewardship Initiative

The Longfellow River Gorge Committee Stewardship Initiative is charged with protecting and enhancing the Mississippi River Gorge area. The river and surrounding parkland are of great importance to our community. It is also a resource of regional, national and international significance. Millions of people (including us) get our drinking water from the Mississippi, and thousands of species of birds and other wildlife depend on natural areas along the river for food and shelter. As stewards of this resource, our efforts are a reflection of our community and the value we place on preserving the river for future generations.



### **Project Partners:**

*Longfellow Community Council; Minneapolis Neighborhood Revitalization Program; National Park Service; Minnesota Department of National Resources; Minneapolis Park and Recreation Board; Great River Greening; People for Parks; Friends of the Mississippi River*

➤ **Lowry Hill East Neighborhood Identification Signs**



Lowry Hill East's new green and blue neighborhood signs welcome all residents and visitors by clearly identifying the neighborhood's formal name, and offering simple yet beautiful images of neighborhood, as represented in the icons created by neighborhood students and cut out of each sign. The icon design also offers a glimpse of the neighborhood seen through the icon cut out, giving the viewer the sense of relationship to neighborhood by what each person may see as he or she notices the sign. The signs are informative, accessible and uplifting, representing the best of community projects.

**Project Partners:**

*Lowry Hill East Neighborhood Association; Minneapolis Neighborhood Revitalization Program; Minneapolis Public Schools/Jefferson Community School; Intermedia Arts*

➤ **Youth Farm and Market Project**

The Youth Farm and Market Project (YFMP) was established in 1995 to provide meaningful work experiences for low-income urban youth, ages 9 to 14. The YFMP is centered on helping economically disadvantaged young people develop the skills and support they will need to make the difficult transition from adolescence to adulthood.

YFMP's goals are to create entrepreneurial work experiences for urban youth, build community by strengthening relationships among youth and other neighborhood residents, create more "youth-friendly" space in urban neighborhoods, teach youth skills to achieve economic independence, and produce high-quality food for low-income people.



**Project Partners:**

*Lyndale Neighborhood Association; Minneapolis Neighborhood Revitalization Program; Minneapolis Public Housing Authority; Zion Lutheran Church; Minneapolis Park and Recreation Board/Painter Park; Minneapolis Public Schools/Lyndale Community School*

# Best Economic Development Project

---

## > Nicollet Avenue Streetscape: Eat Street

The Whittier, Stevens Square and Loring Park Neighborhoods contributed more than \$100,000 in NRP funds for Streetscape planning, which resulted in leveraged funds for the implementation of a beautiful streetscape with trees, decorative iron and brick railings and ornamental lighting. The new Streetscape has fostered the expansion of a restaurant- and food-oriented retail corridor, which came to be known as Eat Street.



Eat Street has become a well-publicized destination, and now it can be toured by the Lakes & Arts Trolley, the Arts & Eats Express and the Sites & Bites Express. The direction of NRP dollars toward planning helped initiate a vital corridor for which all of Minneapolis can be proud. This photo illustrates the "Black Top Frolic," a celebration of the completion and Grand Opening of the New Nicollet — Eat Street.

### **Project Partners:**

*Whittier Alliance, Citizens for a Loring Park Community, Stevens Square Community Organization, Minneapolis Neighborhood Revitalization Program, State of Minnesota, all the businesses along Nicollet Avenue from Grant Street to 29th Street*

## > Green Institute

Residents and friends of the Phillips Neighborhood of Minneapolis were able to turn a proposed site for a garbage transfer station into a center for environmental and community renewal. The Green Institute and



its programs are now turning waste into useful products, creating jobs and producing a cleaner environment. It has continued to inspire and provide pride to those who continue their work on neighborhood activities. It is the residents of the Phillips community and the original activists, Annie Young and Susan Gust, who we wish to recognize with this NRP award. Their dreams of the Phillips neighborhood helped make all the kudos, rewards and success of the Green Institute possible.

### **Project Partners:**

*Green Institute; Minneapolis Neighborhood Revitalization Program; Headwaters Fund; City of Minneapolis; Minneapolis Foundation; Federal Enterprise Community Program; Hugh J. Andersen Foundation; McKnight Foundation; Minnegasco Foundation; Northern States Power Company; State of Minnesota Office of Environmental Assistance; Northwest Area Foundation; Marbrook Foundation; Elmer L. and Eleanor J. Anderson Foundation; Dayton Hudson Foundation; Jay and Rose Phillips Family Foundation; Norwest Foundation; Emma B. Howe Memorial Fund; Marquette Bank; J&B Equipment Co.; Department of Health and Human Services; Federal Enterprise Community; Environmental Protection Agency; State of Minnesota; Minneapolis Community Development Agency; Honeywell Foundation; Whittier Community Development Corporation; Phillips Community Development; Hennepin County; University of Minnesota School of Architecture; American Institute of Architects; Humphrey Institute Center for Urban and Regional Affairs; The Re-Use Center; Habitat for Humanity*

> **Southeast Industrial Area Study and Implementation**

If there were ever a project that showed that neighborhoods and the MCDA could work together to affect real change, this is it. The Marcy-Holmes, Prospect Park and Southeast Como neighborhoods contributed NRP and MCDA funds to commission a planning process. The result was a plan that could actually be implemented, including redesigned and reconstructed roadways, revenue-producing new construction that's responsive to the neighborhoods' desire to "protect the edges," and SEED, the SouthEast Economic Development committee, which, five years later, is still directing the area's development.

**Project Partners:**

*Prospect Park East River Road Improvement Association; Marcy-Holmes Neighborhood Association; Southeast Como Improvement Association; Minneapolis Neighborhood Revitalization Program; St. Anthony Park District Council; Southeast Economic Development Committee; University of Minnesota; Minneapolis Community Development Agency; City of Minneapolis Planning Department; City of Minneapolis Public Works Department; Dinkytown Business Association; Southeast Business Association; Stadium Village Business Association; St. Anthony Park Business Association; Minnesota Pollution Control Agency*

> **Stinson Marketplace/Rose Court Townhomes**

On the site of the deteriorating Rosacker's greenhouse in Northeast Minneapolis now stands a thriving commercial development, Stinson Marketplace and 32 Rose Court townhomes. This was made possible by a \$25,000 grant for land acquisition/demolition, \$100,000 low-interest business loan, and \$500,000 loan guarantee (no longer in force) from Windom Park's NRP Action Plan. The land formerly carried zoning designation that would have allowed uses anywhere from the originally proposed three-story apartment building to an adult-entertainment establishment. Neighborhood input on both planning and financing created a development both pleasing to the neighborhood and a financial boon to the city.



**Project Partners:**

*Windom Park Citizens in Action; Minneapolis Neighborhood Revitalization Program; Minneapolis Community Development Agency; Urban Harvest Café*

> **West Calhoun Village Center**



The Calhoun Commons project, in collaboration with West Calhoun Neighborhood residents, seized the opportunity to restore a previously blighted dump site into the West Calhoun Village Center. The buildings were drawn to the street and accented with colorful landscaping and brick detailing. Overhead utility lines were buried and streetscape amenities added to provide a safe and more inviting environment for pedestrians and bicyclists. The Calhoun Commons project has created a strong, pedestrian-friendly corridor at the western edge of the Midtown Greenway.

**Project Partners:**

*West Calhoun Neighborhood Council; Minneapolis Neighborhood Revitalization Program; Northern States Power; City of Minneapolis Public Works*

# Best Human Services Program

---

## ➤ Glenwood Lyndale Community Clinic

The Glenwood Lyndale Community Clinic provides culturally sensitive health services to residents in surrounding neighborhoods — especially mothers and children of immigrant families. The Sumner-Glenwood NRP provided early access funding to renovate the facility that houses the clinic, as well as funding for outreach staff and activities to nurture participation from immigrants. Currently, the clinic receives more than 10,000 patient visits per year from 1,646 clinic users, in spite of the fact that all housing around the clinic has been torn down as part of the Hollman Decree. The clinic's impact on the provision of health services to the new immigrant communities has been recognized with national awards from the American Hospital Association and SmithKline Beecham.



### **Project Partners:**

*Glenwood Community Center; Glenwood Lyndale Community Clinic; Minneapolis Neighborhood Revitalization Program; Hennepin County Medical Center; Minneapolis Public Housing Authority; Pilot City Health Center; United Way; McKnight Foundation; Minneapolis Department of Health and Family Support*

## ➤ Logan Park- St. Anthony East Community Health Program



The Logan Park-St. Anthony East Community Health Program is a program for all ages that encourages neighbors to help neighbors and build a healthy community for everyone.

The program aims to 1) provide increased access to affordable health care for low income and isolated elderly residents, financially struggling and single-parent families with small children and 2) encourage involvement by every community resident to enhance the health and well-being of their neighbors. The program assists residents with prescription costs, immunizations, flu shots, foot care, insurance applications, in-home nursing services, friendly visitor matches, rides to appointments and agency referrals.

### **Project Partners:**

*Logan Park-St. Anthony East Community Health Program; Logan Park Neighborhood Association; St. Anthony East Neighborhood Association; Minneapolis Neighborhood Revitalization Program; Hennepin County; Minneapolis Community Development Agency Community Initiatives Program; SciMed; North Memorial Medical Center; Wal-Mart -Fridley location; Silver Angel Thrift Store; American Red Cross' KidCare program; Catholic Eldercare; Fremont Clinics: Central Avenue/Sheridan Women & Children's; Girl Scouts; Habitat for Humanity's A Brush with Kindness Program; Healthy Learners Board; Holland Highrise for seniors; North Memorial Health Care Lifeline personal response service; Mental Health Resources, Inc.'s Seward Community Support Program; Minneapolis Hate Crimes Response and Prevention Network; Minnesota Department of Health; Neighborhood Planning for Community Revitalization; University of Minnesota Center for Urban and Regional Affairs; NEST Way To Grow; North East Senior Citizen Resource Center Handyworks; St. Clement's Church; Eastside Neighborhood Services' Seniors' Place; Spectrum Community Health, Inc.; Spring Manor Highrise; Teamsters Manor; U.S. Environmental Protection Agency; Webster Open School and Beacons program*

### > Lyndale Program Fund

Early in Lyndale's revitalization efforts, our Youth & Family Committee expressed concern that all children in our community should have access to the highest-quality programs and services. Residents developed the Lyndale Program Fund to use our community's resources to build the capacity of our neighborhood human service organizations to deliver more effective programs that meet the real needs of residents. The innovative market-based system has successfully served to build a critical sense of accountability between local service providers, parents and their children and has fostered the development of long-term relationships that have strengthened our entire community.



#### **Project Partners:**

*Lyndale Neighborhood Association; Minneapolis Neighborhood Revitalization Program; Church of New Life; First Universalist Church; Redeemer Missionary Baptist Church; Zion Lutheran Church; Lyndale Community School; Minneapolis Park and Recreation Board/Painter Park; Bakken Museum; Minneapolis Public Library/Hosmer Library; YMCA/Blaisdell; Harriet Tubman Center; Loring-Nicollet-Bethlehem Community Center; Old Arizona Studios/Chicas in the Mix Girlzine; Powderhorn Family Network's Way to Grow Program; We Win Institute, Youth Farm and Market Project; Art Start's ArtScrap Mobile; Center for Performing Arts; Cultural Center of Minnesota; Jungle Theater; pArts Photographic Arts; McKnight Foundation; State of Minnesota Department of Children, Families and Learning; United Way of Minneapolis Area; First Universalist Foundation; Jack and Bessie Fiterman Foundation; Gannett Foundation; Kmart Corporate Contributions; Koopp Family Foundation; People in Business Care; NSP Corporate Contributions; Medtronic Foundation; Rotary Club; Best Buy Children's Foundation; Otto Bremer Foundation*

# Best Schools Project

---

## > Cityview School

In 1997, the McKinley Community recognized a once-in-a-lifetime opportunity when they learned that Minneapolis Public Schools would be building six new schools on the Northside. After the selection process, the residents of the McKinley Community were involved in every level of the school's development, including site selection, orientation, building specifications, design and programming.



McKinley is primarily a single-family, early 1900s bungalow community, and the building design needed to reflect the era of the neighborhood and the original McKinley School. The combined efforts of the Minneapolis Public Schools, the architectural firm of Smiley, Glotter and Nyberg, and the people of the McKinley Community designed a building that would reconnect the neighborhood to the great Mississippi River and face the skyline of downtown Minneapolis. The school is open and spacious, yet warm and inviting, making maximum use of natural light. Through a community voting process, the building name became Cityview Community School.

This project has had a positive impact on the neighborhood by creating a solid sense of community and collective ownership. Perkins Hill Park was preserved and connected to the school grounds. Cityview has become an anchor for the neighborhood, fostering redevelopment of the entire area. Removal of blighted housing has encouraged further construction opportunities, including a large church across the street from the school. McKinley Community has initiated extensive revitalization plans that include riverfront reclamation; corridor, business and residential redevelopment; and green space acquisition and expansion.

Cityview is not only a physical gateway to the McKinley Community, but also a symbolic invitation to all ages to participate in the future of a diverse and evolving neighborhood.

### **Project Partners:**

*McKinley Community; Minneapolis Neighborhood Revitalization Program; Minneapolis Public Schools; Minneapolis Park and Recreation Board; Minneapolis Community Development Agency; Smiley, Glotter and Nyberg Architects; Minneapolis Planning Department; DeJong & Associates; Minneapolis Arts Commission*

## > Folwell Linking for Success

Linking For Success is a tutoring and mentoring program designed to provide a positive interaction between high school and middle school students to encourage regular school attendance and improve academic performance with graduation from high school as the program's main objective. This program pairs



9th-, 10th- and 11th-graders with sixth-, seventh- and eighth-graders. Linking For Success is a long-term program. It may never have a wide impact and will be subject to persistent re-evaluation and revision. Only the goals will remain constant and the initiating concept that currently achieving high school students can be positive role models for emerging middle school students who are often the most at risk for academic failure.

### **Project Partners:**

*Folwell Neighborhood Association; Minneapolis Neighborhood Revitalization Program; Minneapolis Public Schools*

### > Jefferson School-Community Playground



The Jefferson School-Community Playground got Lowry Hill East's NRP implementation started with a bang. The neighborhood witnessed an entire playground built in just three days by some 200 community volunteers in August 1997. It was exciting to see two years of planning, design and redesign finally become reality. Volunteers were well fed by neighborhood businesses, which donated coffee, bagels, buns, juice, pizza, salad and bread. Neighbors also pitched in with potluck dinners as the long constructive days came to an end. It was a great partnership between Lowry Hill East, East Isles, Jefferson School, the school district and businesses.

**Project Partners:**

*Lowry Hill East Neighborhood Association; East Isles Residents Association; Minneapolis Neighborhood Revitalization Program; Minneapolis Public Schools*

### > Jefferson School Community Computer Lab

Jefferson Community School became more true to its (middle) name when the school-community computer lab in Room 201 opened its doors Feb. 1, 2001. Funded by the Lowry Hill East NRP and Minneapolis Public Schools, the lab offers 30 ruby-red iMac computers for free community use every Thursday evening, as well as several computer education classes to the community, with waived fees for Lowry Hill East residents. The lab offers an opportunity for people to have free computer access and become more technologically skilled in the friendly company of neighbors.



**Project Partners:**

*Lowry Hill East Neighborhood Association; Minneapolis Neighborhood Revitalization Program; Minneapolis Public Schools*

### > Jefferson School/Neighborhood Organization Collaboration



The Lowry Hill East Neighborhood Association needed office space and Jefferson School needed more visibility in the neighborhood. Both needs were met in the summer of 1999 when Jefferson School donated space in its family resource room to house the neighborhood office. The neighborhood's staff coordinator and the school's family liaison staff person easily share the space and give each other support in their similar jobs of recruiting volunteers and coordinating volunteer projects. Room 107 is used for volunteer meetings for both neighborhood and school programs. The school-neighborhood relationship is strengthened from this sharing of space and resources.

**Project Partners:**

*Lowry Hill East Neighborhood Association; Minneapolis Neighborhood Revitalization Program; Minneapolis Public Schools*

➤ **Lake Harriet Community School Upper Campus**

A master plan was developed to renovate the outdoor space at the Lake Harriet Community School adjacent to the 50th and Xerxes business district at the heart of the Fulton neighborhood. Before the renovations, the site had a negative visual appeal and was in need of functional upgrades. A community-input process was facilitated to develop a usable school site and neighborhood gathering space. A new playground was built through a community-build process utilizing volunteer labor for installation. The result is an attractive, functional and exciting outdoor space for the school and community to utilize.



**Project Partners:**

*Fulton Neighborhood Association; Linden Hills Neighborhood Council; Minneapolis Neighborhood Revitalization Program; Fulton and Linden Hills Neighborhood Volunteers; Minneapolis Public Schools; Hoisington-Koegler Group, Inc.*

➤ **Pratt School Renovation**

Residents rallied for the preservation and reopening of this grand 100 year-old school, even though it had been closed by the district in 1982. NRP funds were used to add an elevator to increase accessibility, a playground, a village green, a performance amphitheater, and update the facility's mechanicals and grounds. More than just an artifact, the Pratt renovation reflects the extensive partnerships within the neighborhood that support a commitment to multi-generational, community-based learning that extends far beyond the building's walls.



**Project Partners:**

*Prospect Park East River Road Improvement Association; Minneapolis Neighborhood Revitalization Program; Minneapolis Public Schools; Minneapolis Public Library; Neighbors Educating Themselves; Piper Jaffray Corporation; Marbrook Foundation; Edward's Memorial Trust; Gamble Skogmo Foundation*

➤ **Waite Park Community School**

When the Waite Park Community School started their NRP Action Plan process in 1995, its vision included one thing that was lacking — a neighborhood school. This had been WPCC's top priority, and the timing could not have been more perfect. The community supported the ideas, and help came from \$151,250 in NRP Early Access funding and \$60,000 matching funds from the Minneapolis Public School Board's 7.5 percent NRP funds for the media center and computer lab. Waite Park NRP funds were also used to establish a Rec +Plus Program (LatchKey) at the same time. The WPCC also allocated \$275,630 in 1995 NRP Transition funds to the community center, which is attached to the school, for park playground improvements and community education activities.

Waite Park Community School and Community Center was the first shared-use facility between the Park Board and School Board. Now as Waite Park School celebrates its 50th year, we can all thank the NRP as a partner in the successful return of Waite Park School to the first community schools.

**Project Partners:**

*Waite Park Community Council; Minneapolis Neighborhood Revitalization Program; Minneapolis Public Schools*

# Best Libraries Project

---

## > Hosmer Library

In 1996 the Hosmer Library, built in 1911 and located at 347 E. 36th St., closed its doors for rehabilitation. When the doors reopened in October 1997, this significant community landmark and institution was completely revitalized. Along with the award-winning historic preservation and rehabilitation, the library now contained a new computer lab and technical center that was made possible with NRP funds that had been committed by the Bryant, Central, Kingfield, Lyndale and Powderhorn Park neighborhoods. This upgrade in equipment and materials sparked an increase in library patronage of more than 100 percent in 1997, 1998, 1999 and 2000. To date, \$440,000 of NRP funding has been invested in the Hosmer Community Library.

### **Project Partners:**

*Central Neighborhood Improvement Association; Bryant Neighborhood Organization; Powderhorn Park Neighborhood Association; Lyndale Neighborhood Association; Kingfield Neighborhood Association; Minneapolis Neighborhood Revitalization Program; Minneapolis Public Library; Minneapolis Friends of the Library; Powderhorn-Central After School Initiatives; Green Central Weed & Seed; Americorps VISTA America Reads Project; Minnesota Literacy Council; Hosmer Fan Club*



# Best Parks Project

---

## > Columbia Park Recreation Area



Thanks to the Columbia Park Neighborhood Association and the NRP, the Columbia Park Recreation Area now includes new playground equipment, a half basketball court, a junior softball field, a rugby/soccer field and a big red slide! The new location, which is closer to the parking area, offers increased visibility and invites all who pass to come and play! Numerous rugby activities have opened the park to use by those from other states and countries while increasing safety by the presence of adults in the recreation area. What once was seen as an unsafe corner of Columbia Park now vibrates with community life and activity.

### **Project Partners:**

*Columbia Park Neighborhood Association; Minneapolis Neighborhood Revitalization Program; Minneapolis Park and Recreation Board; City of Minneapolis; State of Minnesota; Greater Metropolitan Rugby Football Club*

## > Elwell Park

Elwell Park is tucked into a pocket of land at 7th Avenue and 6th Street Southeast in the Marcy-Holmes neighborhood. The concept for the rehabilitated park is an imaginary house (the park is sited on a city lot that once contained a single-family home). The new "house" features public art elements including "front and back porch" gathering spaces, a mosaic tiled "sofa bench" and a bridge that has railings that resemble the head and foot boards of a bed. The public artwork also includes a whimsical metal fence at the entrance and a new mosaic tile shell for the park's beloved concrete turtle. The refurbished Elwell Park was dedicated on Aug. 11, 2000.



### **Project Partners:**

*Marcy-Holmes NRP; Minneapolis Park and Recreation Board; Fredrikson and Byron Foundation; Marcia McEachron; Susan Warner*

> **Loring Park Renovation**



When first developed in 1883, Loring Park was known as Central Park. Today the park still performs a function as the Central Park of the City of Minneapolis. Both residents and nonresidents use the park every day as a place to have a lunch break, take a stroll among the flowers or attend an event. The hundreds of people who were empowered through the Neighborhood Revitalization Program to create a vision for a renovated park, and then see that vision become reality, did so for the benefit and enjoyment of all who visit our community.

**Project Partners:**

*Citizens for a Loring Park Community; Minneapolis Neighborhood Revitalization Program; Minneapolis Park and Recreation Board; Friends of Loring Park; Woman's Club of Minneapolis; Cathedral Church of St. Mark*

> **Lyndale Farmstead Park**

Lyndale Farmstead Park is located on a scenic hillside at 39th and Bryant Ave S. Originally the farmstead of Col. King, this site was acquired by the Minneapolis Park and Recreation Board in 1899. The home at the top of the hill was built for Theodore Wirth, the superintendent responsible for planning the current park system. For many years before the NRP, neighborhood residents had questioned the usage of Lyndale Farmstead Park by a private day-care operation. What was supposed to be a "shared space" was not, except for a summer playground program. The NRP enabled the neighborhood to deal with the conflict and resolve the problem. Lyndale Farmstead Park currently provides programming for all ages.

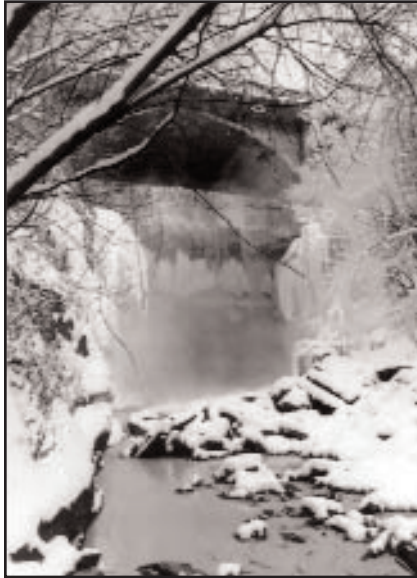


**Project Partners:**

*East Harriet Farmstead Neighborhood Association; Minneapolis Neighborhood Revitalization Program; Minneapolis Park and Recreation Board; Youth Coordinating Board*

## Best Parks Project

### > Mississippi River Gorge Regional Park



By adding stairs from the parkway to the river bank, and a connecting path from the stairway to existing access down river, this project was designed to improve access to the Mississippi River and Bridal Veil Falls, and thereby increase pedestrian traffic in the East Sand Flats and East River Flats. In order to make this project possible, the Minnesota Department of Transportation built an elevated walkway that extended the path upstream and provided handicapped access. Additional projects are in development to extend this park upstream and downstream. Collaborating with state, county and city governments allowed Prospect Park East River Road Improvement Association to leverage \$350,000 in NRP Transition Funds with an additional \$1,400,000 to exceed the original goals.

#### **Project Partners:**

*Prospect Park East River Road Improvement Association; Minneapolis Neighborhood Revitalization Program; Minneapolis Park and Recreation Board; Close-Grant Architects; City of Minneapolis Department of Public Works; Minnesota Department of Transportation*

### > Stewart Park

The renovation of Stewart Park improved every aspect of its presence in the Phillips neighborhood. Thanks to the Neighborhood Revitalization Program, the neighborhood was able to make more than minimal changes to the park. Parking problems at Anderson School were addressed, speed bumps on 12th Avenue slowed traffic, trees were added, higher-profile playing fields were installed, lighting was increased, safety was improved, and the park is now a source of neighborhood pride. Most importantly, the NRP process ensured that the project design and implementation reflected the needs and wants of neighborhood residents.



#### **Project Partners:**

*Phillips NRP Environment and Transportation Committee; Minneapolis Park and Recreation Board; Minneapolis Public Schools; AmeriCorps; Tree Trust Unitree Program; Hennepin County*

#### **Other nominees for Best Park Project include:**

> Jefferson School-Community Playground — Page 19

# Best Community Building Project

---

## > Block Clubs Deluxe

Lyndale's Block Clubs Deluxe (BCD) represents an innovative collaborative program developed between the Lyndale Neighborhood Association and the Minneapolis Police Department's Fifth Precinct to expand traditional block club organizing. BCD fosters a broad-based leadership team on each block comprised of up to eight leaders who encourage neighborhood participation and serve as resources. Since 1996, the program has recruited and maintained 140 block



contracts from all facets of our community. From homeowners to renters, teens to seniors, to Latinos, to African-Americans to residents of European descent, Lyndale has successfully engaged a broad base of residents as leaders in our community.

### **Project Partners:**

*Lyndale Neighborhood Association; Minneapolis Neighborhood Revitalization Program; Minneapolis Police Department/Fifth Precinct SAFE Team; CCP/SAFE Block Leaders; Minneapolis Foundation; Hennepin County; Minnesota Department of Public Safety*

## > Folwell Fun Factory



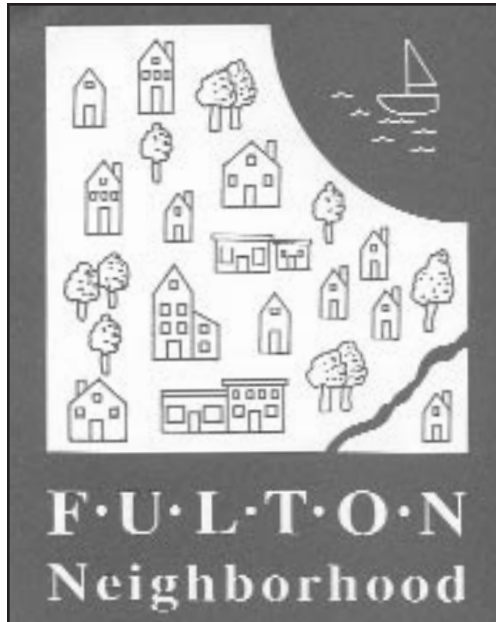
The Folwell Fun Factory is a small, closed trailer packed with active game and sports equipment that is delivered by staff and a Special Projects Team to block parties within the Folwell neighborhood. The Fun Factory was designed as a common ground element, a proverbial icebreaker to facilitate resident communication and community building. The Fun Factory was not designed for broad (meaning large) public participation. Rather, it provides a significant opportunity for broad (meaning multi-generational and diverse) resident interaction.

### **Project Partners:**

*Folwell Neighborhood Association; Minneapolis Neighborhood Revitalization Program*

## Best Community Building Project

### > Fulton Building a Sense of Community Effort



A neighborhood effort was initiated to facilitate residents' awareness of the neighborhood and connection to their community. This effort included the expansion of the Fulton Neighborhood Newsletter, installation of neighborhood signs, distribution of information and welcome packets, an annual Fulton Festival, an annual volunteer recognition program called "Friends of Fulton," formation of the Fulton Safety Committee, and development of a network of block contacts. Construction of a neighborhood announcement sign is currently being planned. These components have helped build community within Fulton and have contributed to the excellent quality of life in the neighborhood.

#### **Project Partners:**

*Fulton Neighborhood Association; Minneapolis Neighborhood Revitalization Program; Minneapolis Park and Recreation Board/Pershing Park; Minneapolis Public Schools; City of Minneapolis Public Works*

### > Lake Street Cultural Festival

The Lake Street Cultural Festival (LSCF) is a one-day celebration of the cultural identities, traditions and community assets present along East Lake Street. It is an outgrowth of the desire of Powderhorn's arts community to contribute to the revitalization of Lake Street. Held in mid-July, this festival is now in its sixth year. The LSCF has been featured as an "Event of Excellence" with the Minneapolis Aquatennial for the last four years, and was awarded a "Quality of Life Award" by the Greater Minneapolis Chamber of Commerce in 1999.



#### **Project Partners:**

*Powderhorn Park Neighborhood Association; Minneapolis Neighborhood Revitalization Program; Walker Art Center; Corcoran Neighborhood Organization; Pillsbury House; Lake Street Partners; Ingebretsen's; Bloom-Lake Business Association; In the Heart of the Beast Puppet & Mask Theatre; Gus Lucky's Coffeehouse; Minneapolis Aquatennial*

### > Mississippi Eastside Neighborhood Development Corporation

The neighborhoods of Bottineau, Sheridan and St. Anthony West, through the formation the Mississippi Eastside Neighborhood Development Corporation (MEND), have positioned their residents to be the leaders of the ongoing effort in creating a community where all of us can LIVE, PLAY, WORK and WORSHIP.

#### **Project Partners:**

*St. Anthony West Neighborhood Organization; Sheridan Neighborhood Organization; Bottineau Neighborhood Association; Minneapolis Neighborhood Revitalization Program*

### > **Mujeres Latinas en Acción**

The 79 Latino women and their families who are involved with Mujeres Latinas en Accion have created a powerful support network for Lyndale's Latino community. The Mujeres Latinas en Accion focuses on building community through creating learning opportunities on topics that are immediately relevant, such as domestic violence, fire prevention and safety, tenants rights, celebrating and sharing Latino culture with their non-Latino neighbors, and supporting each other to achieve economic independence. By taking this holistic approach, we have seen the isolation and alienation that was felt by Latina women five years ago disappear as they build relationships and become more invested in their community.



#### **Project Partners:**

*Lyndale Neighborhood Association; Powderhorn Park Neighborhood Association; Kingfield Neighborhood Association; Whittier Alliance; Jordan Area Community Council; Minneapolis Neighborhood Revitalization Program; Minneapolis Community Development Agency; Otto Bremer Foundation; St. Paul Foundation; Dain Rauscher Corporate Contributions; Phillips Family Foundation; Lowry Hill Foundation; CLUES; Casa d'Esperanza; La Oportunidad; Greater Minneapolis Day Care Association; Minneapolis Police Department; Minnesota State Health Department; Minneapolis Public Schools/Lyndale Community School; University of Minnesota; ADT Security Systems; Sur Express; Marissas Bakery; La Princessa; Ay Caramba*

### > **News From the Farm Newsletter**



"News from the Farm." Doesn't sound like a newsletter from a Minneapolis neighborhood, does it? "The Farm" refers to the history of our neighborhood, which included the farmstead of Colonel William King, to whom we are indebted for much of our beautiful parkland. "News from the Farm" endeavors to inform every household in the East Harriet Farmstead Neighborhood about the wonderful neighborhood we live in and the variety of programs available to residents through NRP and other organizations. This publication has contributed to the success of almost every NRP initiative that has changed our neighborhood, including a flourishing park program, traffic calming, housing grant and loan programs, and much more. It is the voice of the neighborhood.

#### **Project Partners:**

*East Harriet Farmstead Neighborhood Association; Minneapolis Neighborhood Revitalization Program*

### > **Phillips Neighborhood Regional Reorganization**

The Phillips neighborhood was suffering greatly from the dissolution of the People of Phillips Neighborhood Association. There was a tremendous atmosphere of animosity and mistrust among the volunteers that seemed to be aligned along regional boundaries. This atmosphere brought a halt to productive decision-making and, as a result, NRP activity and citizen participation ceased. In the midst of a great deal of consternation, the volunteers began a process to reinvent the way they did business. As a result of several public input sessions and a great deal of discussion, the Phillips neighborhood decided to separate into four separate regions. Each region now operates as an autonomous independent region with a secondary but important goal of continuing to partner with one another when opportunities present themselves. Since the inception of the regional process, each region has established independent organizations, healthy and financially responsible administrative structures and housing programs to serve residents in each region. Each region has completed or is working on a Master Land-Use Development Plan to assist them as they prepare for NRP Phase II spending decisions. Citizen participation continues to increase each month at the regional meetings.

#### **Project Partners:**

*Phillips Ventura Village; East Phillips Improvement Coalition; West Phillips; Midtown Phillips*

## Best Community Building Project

### > Picnic In the Park

Picnic in the Park is a summer celebration of the Hale, Page and Diamond Lake (HPDL) Neighborhoods. This event is the largest community event of the year, with roughly 3,000 (one-third of all residents) HPDL residents attending. HPDL businesses, nonprofits, churches, and committees sponsor booths at the park to disseminate information to their community's inhabitants. Picnic in the Park is a wonderful opportunity for residents, businesses, churches and nonprofits to celebrate their neighborhoods and meet one another while enjoying entertainment, music, food, games, prizes and fun.

#### **Project Partners:**

*Hale, Page, and Diamond Lake Community Association; Minneapolis Neighborhood Revitalization Program; Minneapolis Park and Recreation Board/Pearl Park; TCF; NSP; Norwest Bank; Pearl Improvement and Recreation Council; Art Doucot; GJ's SuperValu*



### > Youth Leadership Initiative

Youth are active and respected community builders in Lyndale. About three years ago, Lyndale residents realized that involving teens as leaders and empowering them to play a key role in shaping their community was critical to our revitalization efforts. Youth are now more than recipients of services and participants in programs. Today, Lyndale's Youth Leadership Initiative annually supports more than 100 teens in implementing dozens of projects that have had a tangible impact on our neighborhood, including: Graffiti Removal and Neighborhood Beautification Projects, three weekend-long leadership retreats, and weekly summer service and enrichment projects since 1999. As testament to our community's success in involving our teens as leaders, Lyndale's Youth Leadership Initiative Neighborhood brought home the 1999 "National Neighborhood of the Year Award" from the Neighborhoods USA Conference.



#### **Project Partners:**

*Lyndale Neighborhood Association; Minneapolis Neighborhood Revitalization Program; Youth Farm and Market Project; YMCA/Blaisdell; Minneapolis Park and Recreation Board/Painter Park; New Life Church; Zion Lutheran Church; Redeemer Missionary Baptist Church; Old Arizona Studios; United Way of Minneapolis Area; Otto Bremer Foundation; Best Buy Children's Foundation; Minneapolis Public Schools/HYPE; Minnesota Department of Economic Security*

### **Other nominees for Best Community Building Project include:**

- > DB Lyon House Renovation — Page 4
- > Green Institute — Page 14
- > Logan Park-St. Anthony East Community Health Program — Page 16
- > Lyndale Farmstead Park Programming and Facility Upgrade — Page 23

# Best Multi-Jurisdictional Project

---

## > Armatage Park/School Complex



This project had a number of components. First, the parking lot at Armatage Park was expanded in size to provide better accessibility for elderly and disabled visitors to the building. Secondly, new construction was completed that added three new classrooms, a computer lab, media center, gymnasium, and office and storage space in a structure that physically joined the school with the park building. An entirely new playground was also built at the park. Finally, a gateway arch sculpture was installed near the new playground. We are very proud of this project and the spirit of community it has generated in our neighborhood.

### **Project Partners:**

*Armatage Neighborhood Association; Minneapolis Neighborhood Revitalization Program; Minneapolis Park and Recreation Board; Minneapolis Public Schools; Hennepin County; State of Minnesota*

## > Harrison Community Center



The Harrison Community Center project was a collaborative initiative of three partners - the Minneapolis Public Schools Level 5 Program, the Harrison Neighborhood, and the Minneapolis Park and Recreation Board - to construct a single building to house the programs of all three partners. The Harrison Neighborhood Association allocated \$300,000.00 of its NRP dollars and conducted a capital campaign leveraging an additional \$400,000.00 — bringing

the total monetary contribution to \$700,000.00. Now residents of Harrison (nearly 40 percent are youth) have a park building three times its original size for programming, and the Harrison Neighborhood Association has a home for the next 20 years.

### **Project Partners:**

*Harrison Neighborhood Association; Minneapolis Neighborhood Revitalization Program; Minneapolis Public Schools; State of Minnesota Youth Initiative; Minneapolis Park and Recreation Board; City of Minneapolis; Minneapolis Foundation; Cowles Media Foundation; McKnight Foundation; West Central Site Development; NSP Energy Assets*

## > Windom Community Center



The Windom Community Center is a bricks-and-mortar dream come true for the residents of the Windom neighborhood. This project came about because of the diligent efforts of the Windom Community Council and Task Force, the Minneapolis Public School Board, the Windom Open School Site Based Management Team, the Minneapolis Park and Recreation Board and the Volunteers of America. The design and final construction produced a beautiful addition to the Windom Open School, which is architecturally compatible with the historic school and functionally efficient for use by the

school, the Park Board, and the Windom Community Council.

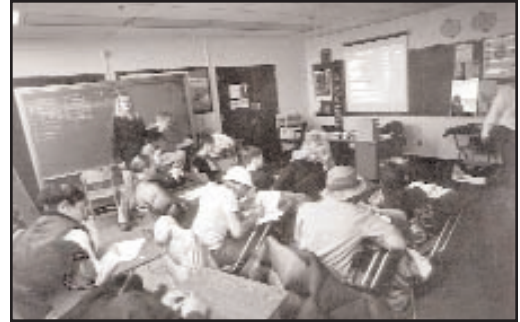
### **Project Partners:**

*Windom Community Council; Minneapolis Neighborhood Revitalization Program; Minneapolis Public Schools; Minneapolis Park and Recreation Board; State of Minnesota; Cowles Media Foundation; Volunteers of America; Windom Open School Site Based Management Team; Miller Hanson Westerbeck Berger Inc. Architects & Planners*

## Best Multi-Jurisdictional Project

### > Teen Job and Opportunity Fair

The Teen Job and Opportunity Fair (TJOF) is a free event that offers Minneapolis youth ages 14-18 employment, volunteer, and employment-ready workshop opportunities in one convenient location. For the seventh year, employers and service agencies have the opportunity to connect with more than 700 prospective youth employees and volunteers at South High School. There are more than 56 participating organizations involved with the planning, participation, volunteer and financial support of the Teen Job and Opportunity Fair. This event not only serves as an opportunity for youth, businesses and nonprofits, but also as a celebration of the city's resource of energetic and motivated youth.



#### **Project Partners:**

*Hale, Page, and Diamond Lake Community Association; Bancroft Neighborhood Association; Corcoran Neighborhood Organization; Field-Regina-Northrop Neighborhood Group; Standish-Ericsson Neighborhood Association; Minneapolis Neighborhood Revitalization Program; Longfellow United for Youth and Families; YWCA/Midtown; University of Minnesota Division of Epidemiology; Minneapolis Public Schools; South High School; Benjamin Banneker Community School; Minneapolis Park and Recreation Board; Hennepin County Children and Family Services; What's Up Youth Information Line; City of Minneapolis and the Mayor's Office; MAD DADS; Folwell Middle School Survival Arts Team; Employment Action Center; Minnesota Workforce Center; KMOJ; Minneapolis Community Development Agency; TCF; Star Tribune Foundation*

### > Whittier Community School for the Arts

A major priority for the Whittier Community was to attract a public elementary school. The Whittier neighborhood is home to 3,300 children and there had been no school in Whittier since the early 1970s. The Parks Community Center and a new school utilized more than \$1 million in Whittier NRP funds to acquire and clear land adjacent to Whittier Park, fund a renovation of the park and construct a new gymnasium that could be shared by the school, park and community. Both the School Board and the Park Board were willing to think out of the box and develop a state-of-the-art project in spite of the barriers of land size and financial limitations. This CUE award-winning project was a dream come true for the Whittier Neighborhood.



#### **Project Partners:**

*Whittier Alliance; Minneapolis Neighborhood Revitalization Program; Minneapolis Park and Recreation Board; Minneapolis Public Schools; Youth Coordinating Board; City of Minneapolis; Intermedia Arts; SASE-The Write Place; Minneapolis Institute of Arts; MacPhail School of Music; Madeline Island Music Camp; pARTs Photographic Gallery; Minneapolis College of Art and Design; Jungle Theater; Creatives for Causes - Art Buddies; Children's Theatre; Minnesota Dance Alliance; Book Pals (Screen Actor's Guild); Whittier Alliance Arts and Education Committee; MN Sinfonia; Plymouth Congregational Church*

### **Other nominees for Best Multi-Jurisdictional Project include:**

- > Logan Park-St. Anthony East Community Health Program — Page 16
- > Mississippi Gorge Regional Park Improvements — Page 24

# The Awards Committee

## ➤ **Rex A. Holzemer**

Rex Holzemer is a Senior Administrative Manager in the Hennepin County Center for Health Policy and Community Services Integration. He has a primary role in coordinating Hennepin County's staff involvement in a number of community-based partnerships, including the Minneapolis Neighborhood Revitalization Program. He also has management responsibility for the Hennepin County Multi-Cultural Service Delivery Project and the Community HeroCard Program.

## ➤ **John Hotvet**

John Hotvet, Traffic Operations Engineer in the Transportation & Parking Services Division, has been an employee of the Minneapolis Department of Public Works for 25 years. Prior to his current position, John was the Public Works liaison to the NRP for eight years and has dealt with many neighborhoods on Public Works-related items.

## ➤ **Kim Keilholtz**

Kim Keilholtz is a Fulton Neighborhood Association (FNA) Board Member. Keilholtz is currently the chair of the NRP Implementation Committee.

## ➤ **Julia Paulsen**

Julia Paulsen has been a Planner with the Minneapolis Planning Department and City Coordinator's Office for seven years. She has worked extensively with the Neighborhood Revitalization Program - with neighborhoods, the program and planning for Phase II.

## ➤ **Michael Rainville Sr.**

Michael Rainville Sr. has served as the chair of the St. Anthony West Neighborhood Organization since 1986. He has utilized the NRP to create innovative improvements to his neighborhood such as the annual "cops on bike" program in cooperation with St. Anthony East and the Nicollet Island East Bank neighborhoods, the NE Housing Resource Center in cooperation with the Greater Metropolitan Minneapolis Housing Corporation and the formation of the Mississippi Eastside Neighborhood Development Corp. (MEND) a partnership of the Bottineau, Sheridan and St. Anthony West neighborhoods.

## ➤ **Matthew L. Ramadan**

Mr. Ramadan currently serves as the Executive Director of the Northside Residents Redevelopment Council, Inc. In April of 1999, Mr. Ramadan was appointed by Gov. Jesse Ventura to serve as the Metropolitan Council member from District 7, representing all of north and downtown Minneapolis and part of south Minneapolis. He has also been a consultant to the Minnesota Department of Corrections since 1979. Mr. Ramadan serves on the boards of the Minneapolis Foundation, the American Muslim Council -- Minnesota Chapter, Turning Point, the Citizens League, the Minneapolis Private Industry Council, the Minneapolis Consortium of Community Developers, and the Twin Cities Economic Development Group. In public service, he has served on two governor's task forces (Drugs and Crime in 1989, and Affordable Housing in 1994), and the city of Minneapolis' MCDA Review, Nicollet Mall and Convention Center task forces.

## 2000 NRP Policy Board

**Sharon Sayles Belton**, Minneapolis Mayor  
**Jason Amundsen**, Revitalization  
Neighborhood Representative  
**Emmett Carson**, President, The  
Minneapolis Foundation  
**Jackie Cherryhomes**, President,  
Minneapolis City Council  
**Karen Clark**, Minnesota State  
Representative  
**James Colville**, Director, Greater  
Minneapolis United Way  
**Gail Dorfman**, Hennepin County  
Commissioner  
**Judy Farmer**, Chairperson, Minneapolis  
Public School Board  
**Diane Hofstede**, Trustee, Minneapolis  
Library Board  
**David M. Jennings**, President, Greater  
Minneapolis Chamber of Commerce  
**Dick Johnson**, President, Minneapolis  
Central Labor Union  
**Nicholas Kakos**, Protection  
Neighborhood Representative  
**Peter McLaughlin**, Hennepin County  
Commissioner  
**Clareyse Nelson**, Redirection  
Neighborhood Representative  
**Gretchen Nicholls**, At-Large  
Neighborhood Representative  
**john a. powell**, Executive Director,  
Institute on Race and Poverty  
**Edward Solomon**, President, Minneapolis  
Park & Recreation Board  
**Mark Stenglein**, Hennepin County  
Commissioner

## Alternates

**Earnest Belton**, Commissioner,  
Minneapolis Park & Recreation Board  
**Walt Gutzmer**, Redirection Neighborhood  
Representative  
**Ken Kelash**, Minneapolis Central  
Labor Union  
**Byron Laher**, Greater Minneapolis  
United Way  
**Barret W.S. Lane**, Minneapolis City  
Council  
**Kevin Ogburn**, Revitalization  
Neighborhood Representative  
**Joanne Walz**, Minneapolis  
Foundation  
**Judy Schwartzau**, At-Large Neighborhood  
Representative  
**Denise Stephens**, Greater Minneapolis  
Chamber of Commerce  
**Ron Thaniel**, Assistant to the  
Minneapolis Mayor  
**Linda Wejcman**, Minnesota State  
Representative  
**Mary Tambornino**, Hennepin County  
Commissioner

**The Minneapolis Neighborhood Revitalization Program is an innovative effort to bring residents into the priority-setting process of their city. It is based on the belief that the empowerment of residents and the mobilization of untapped resources, energy and creativity can make our progressive vision of the future a reality.**



**The Minneapolis Neighborhood Revitalization Program**

Crown Roller Mill, Suite 425  
105 Fifth Avenue South  
Minneapolis, MN 55401

Phone: (612) 673-5140  
Fax: (612) 673-5138

[www.nrp.org](http://www.nrp.org)

Published by the Minneapolis Neighborhood Revitalization Program, February 2001  
All project narratives in the Awards Guide were written by the nominating organization  
Awards nomination information compiled by Brett Feldman and Willie Willis  
Editing and Design by Laura Bobendrier  
Cover Design by Rob Mossefin

---